



Specifications

Material

- » Microsurfaced impact acrylic

Finish

- » Matte non-glare
- » Gloss ■
- » Brushed metal*
- » Patterned*

Minimum Sheet Size

- » 24" x 48¾" (610 x 1238mm)
- » 23 1/2" x 49" (597 x 1245mm) (Port Wine-LM922-677)

Thickness 2-ply

- » 1/32" (0.8mm) Use LM912 as first digits in item code.
- » 1/16" (1.6mm) Use LM922 as first digits in item code.
- » 1/8" (3.2mm) Use LM942 as first digits in item code. (Gauges are approximate.)

Usage

- » Interior signage*
- » Exterior signage
- » Personal Identification
- » Trophies and awards

Engraving Method

- » Laser
- » Rotating carbide

Engraving Depth

- » .003" (.08mm)

Fabrication

- » Scores
- » Saws
- » Drills
- » Shears
- » Laser vector cuts
- » Screen prints
- » Heat bendable
- » Permits fine detail engraving
- » Bevels
- » Hot stamps
- » Bonds
- » UV stable*
- » Outdoor weatherable*

Visit rowmark.com for Rowmark's complete line of products for rotary engraving, laser engraving and sublimation.

Find answers to all your questions in the Technical Help section. Be sure to check out support tools under the Sales Tools and Downloads sections.

*Some LaserMax® foils are not recommended for applications in which UV stability is a requirement. NoMark® Plus finish is available on all LaserMax® metals by adding "0+" to the end of the item code. • Not recommended for harsh or high humidity indoor or outdoor applications.

To request a sample or promotional literature, please call 1-877-ROWMARK (419-429-3160) or email samples@rowmark.com. For technical assistance, call 1-877-ROWMARK (419-429-3160), visit www.rowmark.com or email inquiries@rowmark.com.

Can't find exactly what you're looking for? We can build any combination of cap and core within the LaserMax® product line. Also, be sure to check out the Varsity Collection page at www.rowmark.com. Contact your authorized Rowmark distributor or speak with one of our customer service specialists at 1-800-243-3339 (419-425-2407).



LaserMax® Sign Kit item #9034

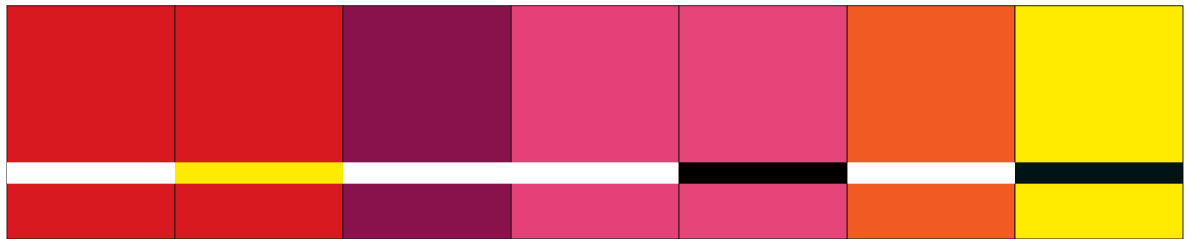
You may place your LaserMax® Sign Kit order at www.rowmark.com, or fabricate the signs on your own using the file found under the downloads section of our website.



rowmark.com / 1.877 ROWMARK / samples@rowmark.com



Answering the needs of today's laser engraver, LaserMax® features include an enhanced heat tolerance and UV stable color foils. LaserMax is engineered for cleaner and faster engraving.



LM9X2-602 Crimson/White
LM922-607 Crimson/Yellow
LM922-622 Claret/White
LM922-662 Ribbon Pink/White
LM922-664 Ribbon Pink/Black
LM922-612 Tangerine/White
LM9X2-704 Canary/Black



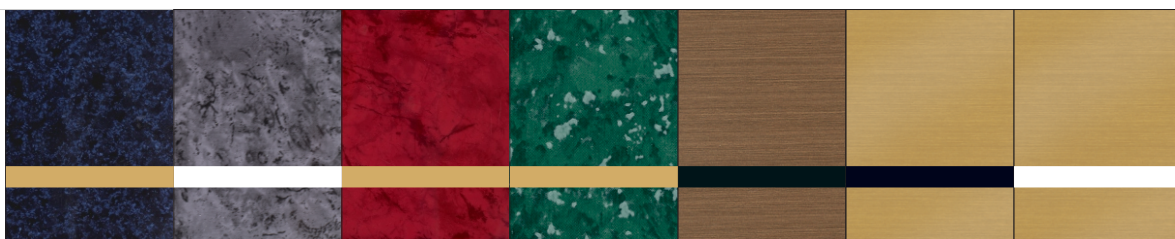
LM922-932 Kelley Green/White
LM922-972 Celadon Green/White
LM922-912 Evergreen/White
LM9X2-512 Sky Blue/White
LM922-517 Sky Blue/Yellow
LM9X2-502 Sapphire/White
LM922-562 Light Blue/White
LM922-552 Patriot Blue/White
LM922-382 China Blue/White
LM922-582 Purple/White



LM922-206 White/Crimson
LM922-226 White/Burgundy
LM922-205 White/Sky Blue
LM922-209 White/Bright Green
LM922-269 White/Pine Green
LM9X2-204 White/Black
LM922-228 Ivory/Dark Brown
LM922-854 Almond/Black
LM922-326 Light Grey/Burgundy
LM922-325 Light Grey/Marine Blue



LM922-324 Light Grey/Black
LM922-312 Smoke Grey/White
LM922-822 Med. Brown/White
LM922-842 Dark Brown/White
LM9X2-402 Black/White
LM922-422 Gloss Black/White
LM922-407 Black/Yellow
LM922-417 Black/Gold
LM922-427 Gloss Black/Gold
LM922-413 Black/Silver



LM922-577 Celestial Blue/Gold
LM922-362 Harbor Grey/White
LM922-677* Port Wine/Gold
LM922-937* Verde/Gold
LM922-884* Deep Bronze/Black
LM922-874* Br. Bronze/Black
LM922-872* Br. Bronze/White



**Some LaserMax® foils are not recommended for applications in which UV stability is a requirement.*



LM9X2-734* Br. Gold/Black
LM9X2-754*♦ European Gold/Black
LM922-714* Smooth Gold/Black
LM9X2-354* Br. Alum./Black
LM922-334* Br. Silver/Black
LM922-344* Smooth Silver/Black
LM922-922 Digicam Std. Issue/White
LM922-982 Digicam Green/White
LM922-844 Digicam Desert Storm/Black
LM922-694 Digicam Pink/Black