



Underground Buoyancy Anchoring

To control the flotation of underground MEP services



- Lightweight & durable
- Easy to install
- Ready-to-use kits
- Versatile

Underground Buoyancy Anchoring Kit




GRIPPLE FASTENER

Corrosion resistance

Contains ceramic rollers and stainless steel springs for optimum corrosion resistance.

Maintains tension

Internal locking system self-tightens.



GRIPPLE ANCHOR

Specifically designed

Frontal profile allows for ease of install while the top profile caters to high loads.

A subtle solution

Narrow profile minimizes disturbance surrounding soil.

Suitable for installation into all soil types, Gripple's Underground Buoyancy Anchoring kit is a solution which has been specifically engineered to prevent all uplift in any MEP services which are at risk of flotation.

The simplicity of the kit means that it can be attached directly to the conduit bank 'spacer', wrapped around the conduit bank itself, or used with a Gripple support bracket as a reinforcement method. The kit can be easily integrated into all current systems without the requirement for heavy machinery during installation.



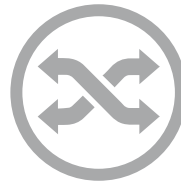
The Benefits



Gripple solutions only require one person to install



Fully protects against all upward forces



The versatility of the anchors means they are suitable for most ground types



Minimal soil disturbance means the strength of the trench walls is maintained

Installation Accessories



GAS POWERED DRIVER (GPD)

- Gas-Powered Driver with proven reliability
- No generators, compressors, air hoses or extension cords required
- Lightweight & portable
- Saves time, money, and energy



DRIVE ROD

- Purpose engineered for toughness and durability
- Capable of penetrating the toughest soil
- Features specific head profiles to match anchors



JACKJAW®

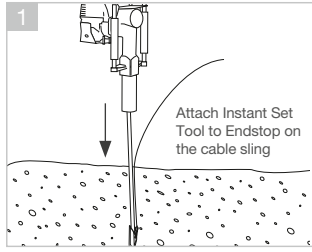
- Extracts Drive Rods and load locks
- Jaw and lever mechanism ensures ease of extraction
- Smooth extraction without bending
- Available with load cell for immediate testing



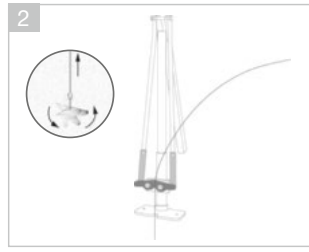
GRIPPLE SUPPORT BRACKETS (OPTIONAL)

- Quick and easy reinforcement method for conduit banks
- Pre-cut lengths

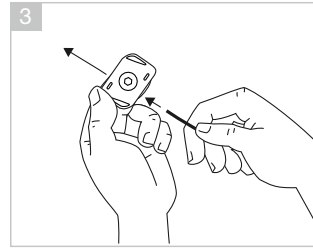
Gripple Anchor/Fastener Installation



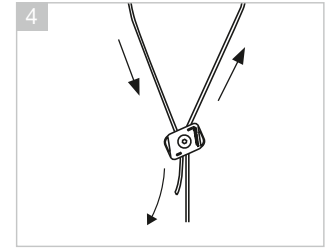
1 Use the Drive Rod to install the anchor in the ground. (To depth of at least 2ft).



2 Use the JackJaw to load lock the anchor.



3 Attach the Gripple Fastener.



4 Loop through duct bank card or spacers and back into the Gripple lock. Tension by hand.

Anchor Performance

The standard penetration test (SPT) is widely used to determine the strength and deformation properties of the current soil. Approximate correlation of properties of drained granular soil are:

- VERY LOOSE (SPT 0-4)
- LOOSE (SPT 4-10)
- MEDIUM DENSE (SPT 10)
- DENSE (SPT 30-50)
- HIGH DENSITY (SPT >50)

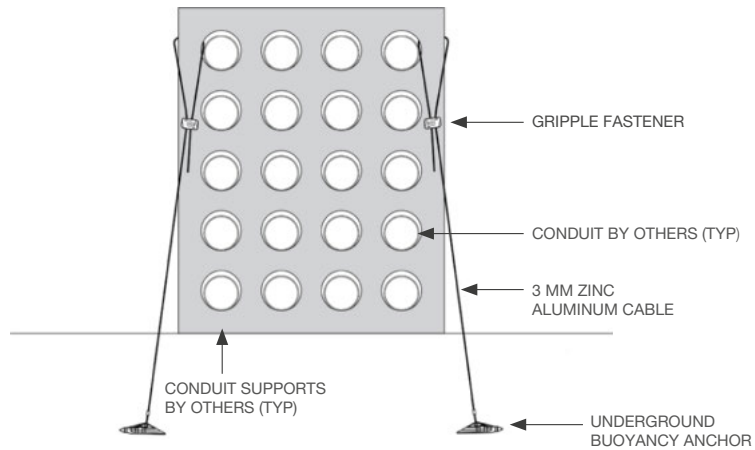
These figures can then be used to obtain typical shear strength and bulk unit weight for each soil type. This information is then used to predict Gripple Anchor Performance in relation to the conditions described.

The following graphs are derived from idealized theoretical calculations and should be used as a guide only. The variability of soil types should always be taken into account.

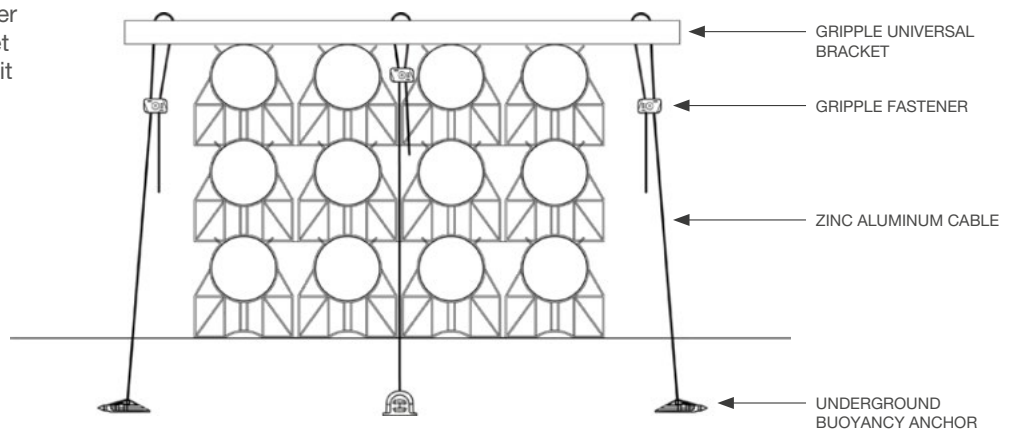
Soil Density	Anchor Performance	
	Install Depth 3ft	
VERY LOOSE SPT 0-4	154	231
LOOSE SPT 4-10	231	381
MEDIUM DENSITY SPT 10-30	381	1073
DENSE SPT 30-50	1073	2610
HIGH DENSITY SPT >50	2610	3961
Wire Rope Break	3mm - 1800 lbs.	

Conduit Bank Installation Methods

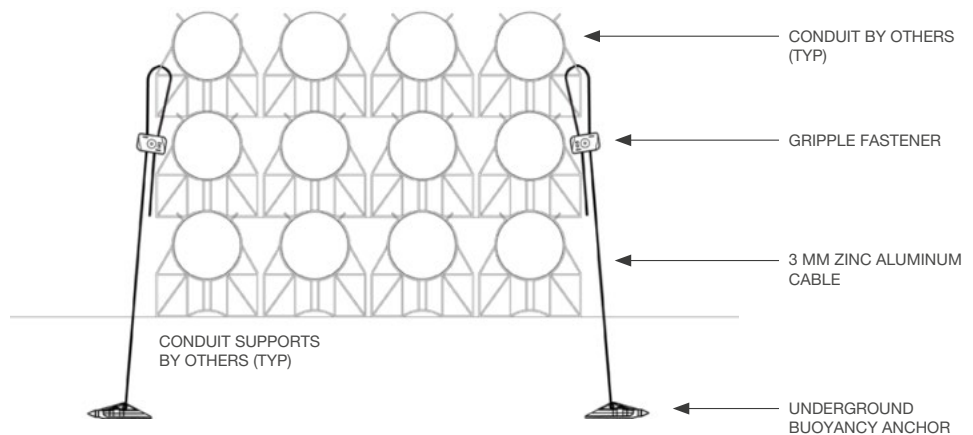
The Gripple Underground Buoyancy Kit can be easily integrated into any type of system - utilizing the card/spacer as an anchoring point without causing any damage.



The conduit bank can be further supported by a Gripple bracket which can be included in the kit as a reinforcement method.



The kit's 3mm cable means that it can pass through the smallest gaps- such as those on modular spacers - to provide full protection against uplift.





**PROFESSIONAL
PLASTICS**

1.800.966.PROS

professionalplastics.com

PROFESSIONAL PLASTICS IS A PROUD DISTRIBUTOR OF GRIPPLE PRODUCTS

GRIPPLE[®]



A GLIDE company

© 2024 Grippl

Grippl is a registered trademark of Grippl Limited.
Company registered in England No. 1772901, VAT Reg No. GB 600 1951 88