

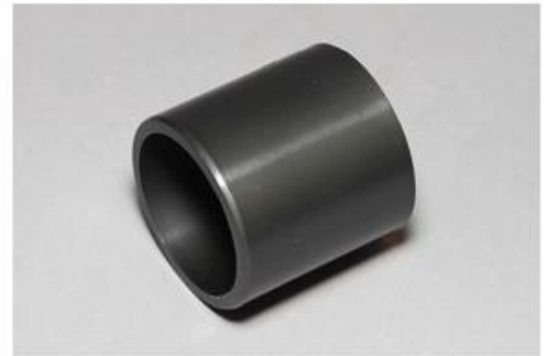


PROFESSIONAL PLASTICS

Sleeve Bearings

Sleeve Bearings

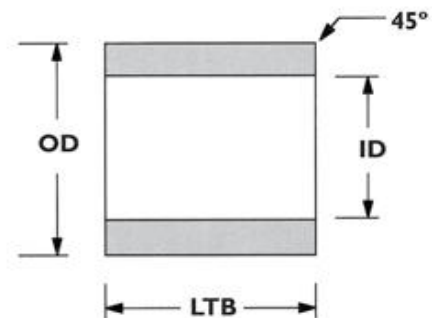
P/N	Nominal Size (ID)	(OD)	(LTB)
NSB020402	1/8	1/4	1/8
NSB020404	1/8	1/4	1/4
NSB020406	1/8	1/4	3/8
NSB060503	3/16	5/16	3/16
NSB060504	3/16	5/16	1/4
NSB060506	3/16	5/16	3/8
NSB060508	3/16	5/16	1/2
NSB040602	1/4	3/8	1/8
NSB040603	1/4	3/8	3/16
NSB040604	1/4	3/8	1/4
NSB040605	1/4	3/8	5/16
NSB040606	1/4	3/8	3/8
NSB040608	1/4	3/8	1/2
NSB040610	1/4	3/8	5/8
NSB040612	1/4	3/8	3/4
NSB050704	5/16	7/16	1/4
NSB050705	5/16	7/16	5/16
NSB050706	5/16	7/16	3/8
NSB050708	5/16	7/16	1/2
NSB050710	5/16	7/16	5/8
NSB050712	5/16	7/16	3/4
NSB060804	3/8	1/2	1/4
NSB060806	3/8	1/2	3/8
NSB060808	3/8	1/2	1/2
NSB060810	3/8	1/2	5/8
NSB060812	3/8	1/2	3/4
NSB060816	3/8	1/2	1
NSB070903	7/16	9/16	3/8
NSB070908	7/16	9/16	1/2
NSB081004	1/2	5/8	1/4



NOTE

Material: MD Nylon (other materials are available upon request)

You are not limited to what is shown above. Power Plasticsoffers bushings and bearings in all configurations using many types of materials from UHMW-PE to Nylon to PTFE for high heat applications.



www.professionalplastics.com

sales@proplas.com

USA (888) 995-7767 – Singapore +65 6266-6193 – 台灣 Taiwan +886 (3) 5357850