

# Application Case Story

## Meldin® 7000 Series

**APPLICATION:**

Diesel Turbocharger Linkage

**MATERIAL:**

Meldin® 7021

**PART DEFINITION:**

Spherical Bearing

**TECHNICAL DATA:**

**TYPICAL DIMENSIONS:**

.40" ID x .57" OD x .24" Length  
(10.16mm x 14.48mm x 6.10mm)

**SPEED:** 1' (.3m)/min

**COUNTERFACE:** 304 Stainless Steel

**LUBRICATION OR MEDIA:**

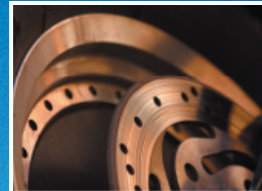
No Lubrication

**WORKING TEMPERATURE:**

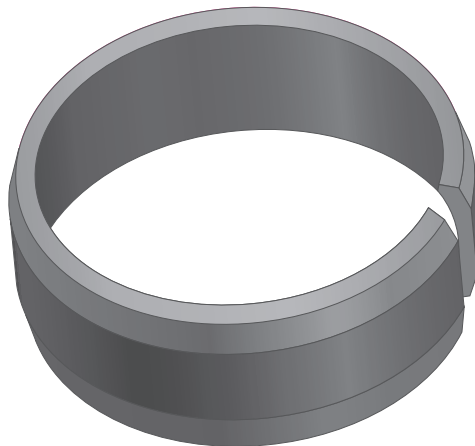
650°F (343°C) Maximum

**FEATURES / BENEFITS:**

This linkage bearing must operate in a continuous high temperature environment, and **Meldin® 7021** has demonstrated good low frictional properties under the high temperature condition that typically causes other bearings to seize and fail. This turbocharger linkage must operate smoothly under all circumstances, and self-lubricating **Meldin® 7021** has been tested as having the best frictional properties under these demanding high temperature conditions.



TURBOCHARGER LINKAGE



MELDIN® 7021  
SPHERICAL BEARING



Saint-Gobain Performance Plastics  
North America: 1-800-223-4966 Bristol, RI, USA  
Europe: +32 3 458 28 28 Kontich, Belgium  
Asia: +81 33 26 30 285 Tokyo, Japan  
Email: [sgppl.marketing@saint-gobain.com](mailto:sgppl.marketing@saint-gobain.com)  
Website: [www.rulon-meldin.com](http://www.rulon-meldin.com)

ACS-473-PDF-0707-SGCS

Meldin® is a registered trademark.  
©2007 Saint-Gobain Performance Plastics