

# Application Case Story

## Meldin® 7000 Series

**APPLICATION:**

Regulator Valve

**MATERIAL:**

Meldin® 7001

**PART DEFINITION:**

Valve Seat

**TECHNICAL DATA:**

**TYPICAL DIMENSIONS:**

.18" ID x .63" OD x .07" Thickness  
(4.6mm x 16.0mm x 1.8mm)

**SPEED:** 30' (9.14m)/minute

**COUNTERFACE:** 316 Stainless Steel

**LUBRICATION OR MEDIA:**

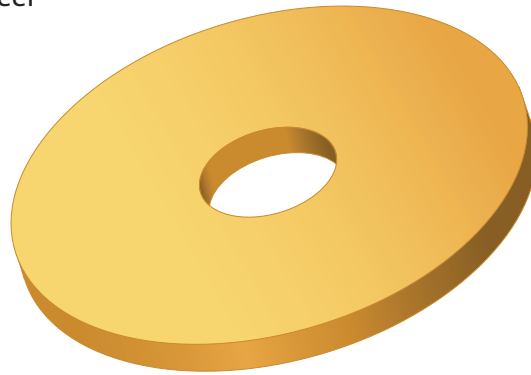
Compressed Natural Gas,  
Other Gases and Chemicals

**WORKING TEMPERATURE:**

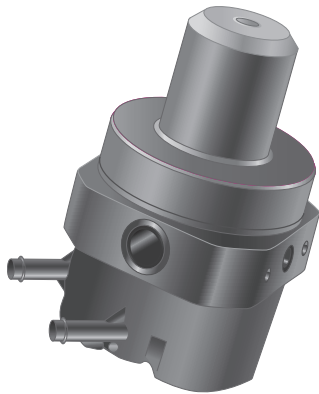
300°F (149°C) Maximum

**FEATURES / BENEFITS:**

This valve seat component for a regulator valve undergoes repeated rapid impact, and **Meldin® 7001** has demonstrated good impact resistance and sealing performance under these conditions. The **Meldin® 7001** material shows excellent sealing, conformability, and durability performance compared to other polymer materials, especially at high application temperatures.



MELDIN® 7001  
VALVE SEAT



**COMPRESSOR PUMP**

**Saint-Gobain Performance Plastics**

**North America:** 1-800-223-4966 Bristol, RI, USA

**Europe:** +32 3 458 28 28 Kontich, Belgium

**Asia:** +81 33 26 30 285 Tokyo, Japan

**Email:** [sgppl.marketing@saint-gobain.com](mailto:sgppl.marketing@saint-gobain.com)

**Website:** [www.rulon-meldin.com](http://www.rulon-meldin.com)

ACS-471-PDF-0607-SGCS

Meldin® is a registered trademark.  
©2007 Saint-Gobain Performance Plastics

