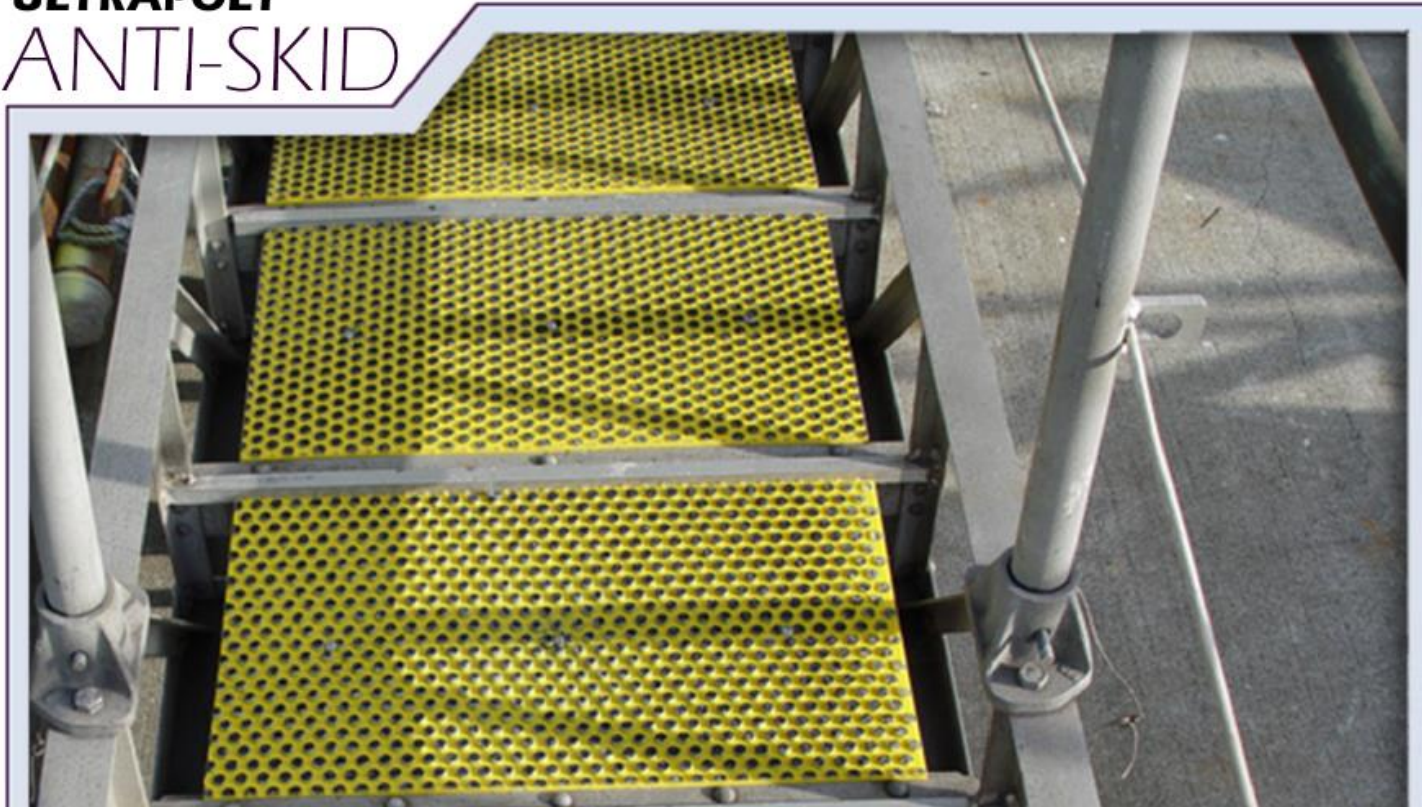




**PROFESSIONAL  
PLASTICS**

**ULTRAPOLY  
ANTI-SKID**



Ultra High Molecular Weight Polyethylene - Braxx<sup>®</sup>



Braxx<sup>®</sup> - Sand



Braxx<sup>®</sup> - Slag



**BRAXX®** Partially sand or slag impregnated UHMW-PE anti-skid surface

FEATURES

Safeguards pedestrian and vehicular slip hazard areas  
High visibility  
Virtually permanent  
Maintenance free

Installs easily over wood, concrete, steel and aluminum

Will not corrode or rot

Eliminates paint or tape

Impact resistant

COLORS

Gray on Blue - Sand

Black on Yellow - Slag

SIZES

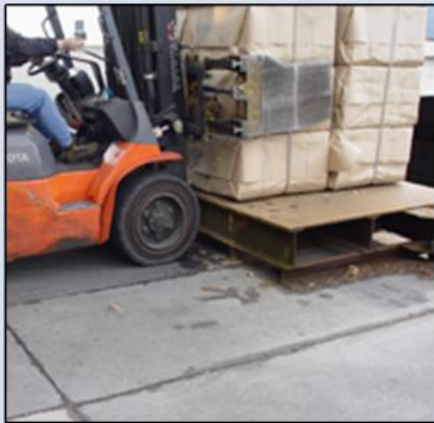
Thickness

inch / mm

0.3 / 7

Sheet Size

36 x 108 / 910 x 2740



APPLICATIONS

Braxx®

Steps

Ramps

Boat Decks

Dock Plates

Low Light Areas

Vehicular Anti-Slipping

**Order Braxx® Online at:**

[http://www.professionalplastics.com/Braxx\\_Anti-SkidUHMW\\_Sheet](http://www.professionalplastics.com/Braxx_Anti-SkidUHMW_Sheet)



**PROFESSIONAL  
PLASTICS**



# LUNS® Slag impregnated UHMW-PE anti-skid decking surface

## FEATURES

More aggressive anti-skid than Braxx®  
Safeguards pedestrian and vehicular slip hazard areas  
Virtually permanent  
Maintenance free

Will not corrode or rot  
Installs easily over wood, concrete, steel and aluminum  
Eliminates paint or tape  
Impact resistant

## COLORS

Black on Black - Slag

## SIZES

	<u>Standard</u> inch / mm	<u>Capabilities</u> inch / mm
Thickness	0.375 / 9.5	0.5 - 4 / 12 - 100
Sheet Size	48 x 60 / 1220 x 1524	48 x 120 / 1220 x 3050

## APPLICATIONS

### Luns®

Stair Treads  
Marina Gangways  
Wheel Chair Ramps  
Pedestrian Walkways  
Vehicular Anti-Slipping  
Forklift Inclines and Dock Plates



Luns® - Slag

**Order Luns® Online at:**

[http://www.professionalplastics.com/Luns\\_Anti-Skid\\_UHMW\\_Sheet](http://www.professionalplastics.com/Luns_Anti-Skid_UHMW_Sheet)

[www.professionalplastics.com](http://www.professionalplastics.com)

[sales@proplas.com](mailto:sales@proplas.com)

**USA (888) 995-7767 – Singapore +65 6266-6193 – 台灣 Taiwan +886 (3) 5357850**